

Datasheet _ MG210

Products (Part number)

- Receptacle (MG210RE02)
- Plug to plug cable assembly 200mm, no mark (MGC10216)
- Plug to plug cable assembly 200mm, 1-line mark (MGC10217)
- Plug to plug cable assembly 200mm, 2-lines mark (MGC10218)
- Plug to plug cable assembly 200mm, 3-lines mark (MGC10219)

Accessory (Part number)

- Plug to Female SMAs cable assembly 140mm (TRA2PA5)
- Plug to Male SMAs cable assembly 170mm (TRA2PA6)
- Tweezer for Mating and unmating a plug (GJSZZA1)





Document No.	CAD-MG2-C2-200
Date / Rev.	February 26, 2021 / 2.6
Confidential level	N/A

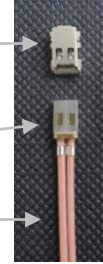
1. MG210 Products

1.1. Receptacle (P/N : MG210RE02)

1.2. Plug to plug cable assembly (P/N : MGC10216)

1.2.1. Plug for cable (P/N : MG210PL02)

1.2.2. Raw cable (P/N : MT_32X1_B1)



2. Electrical & Mechanical Specification

2.1 Raw Cable (P/N : MT_32X1_B1)

Layers		Material	Thickness
1	Center Conductor	Silver Plated Copper [Solid]	0.203 [mm] / 0.008 [inch]
2	Dielectric	LDPFA [Extruded]	-
3	1 st / 2 nd Shield	Tin plated copper wire /Copper polyester tape	
4	Jacket	Polyester Tape & PFA	0.88 [mm] / 0.035 [inch]

Characteristic Impedance	Typ. 50 Ω
Operating Frequency	DC to 10 GHz
Temperature	-40 °C ~ +85 °C
Velocity of Propagation	78% nominal
Minimum Bend Radius	4 mm / 0.157 inch
Shielding Effectiveness	<-70 dB

Frequency	Insertion Loss	
	[dB/10cm]	[25°C, at Sea Level] [dB/FT]
1 GHz	- 0.17	- 0.530
2 GHz	- 0.25	- 0.762
4 GHz	- 0.37	- 1.115
6 GHz	- 0.47	- 1.421
10 GHz	- 0.65	- 1.957



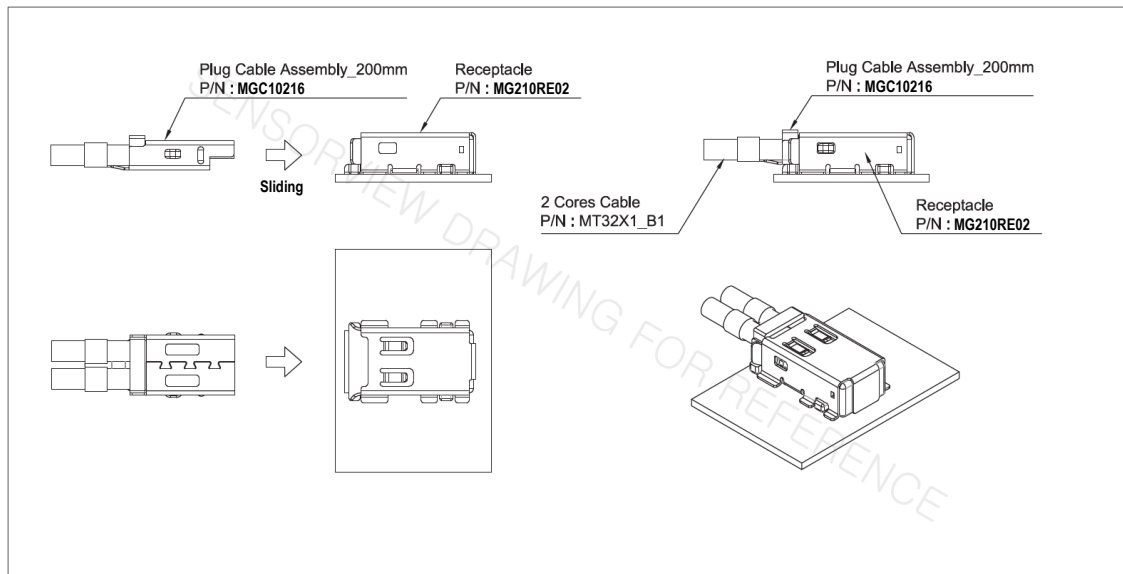
Document No.	CAD-MG2-C2-200
Date / Rev.	February 26, 2021 / 2.6
Confidential level	N/A

2.2 MGC10216 & MG210RE02 _ both-ends mated condition

Specification	Frequency	Performance
VSWR (Max.)	10MHz ~ 10GHz	1.5
Insertion Loss (Min.)	DC ~ 10GHz	- 1.70dB
Crosstalk	DC ~ 10GHz	< -40dB

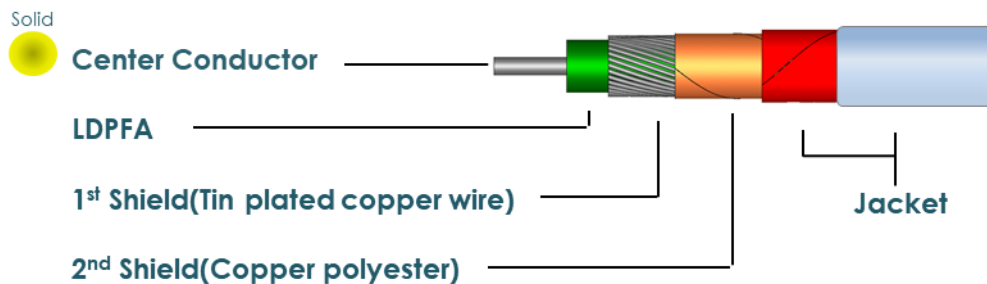
3. Structure Figure

3.1. MGC10216 Mated into MG210RE02



3.2. MT_32X1_B1

Flammability rating : UL94-V0



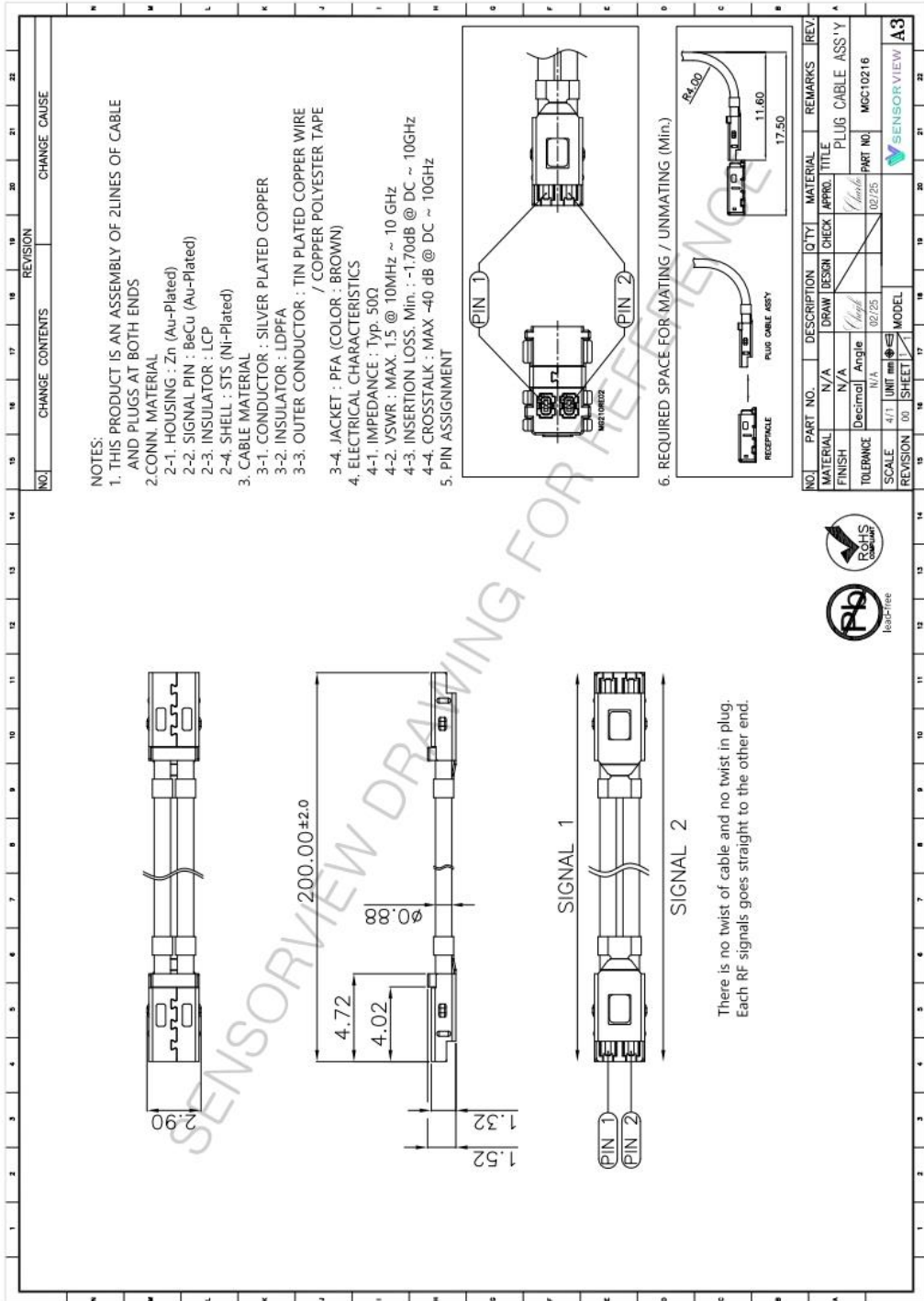


Document No.	CAD-MG2-C2-200
Date / Rev.	February 26, 2021 / 2.6
Confidential level	N/A

4. Drawing

Length of cable can be modified by request

4.1. Plug to plug cable assembly 200mm, no mark (P/N : MGC10216)



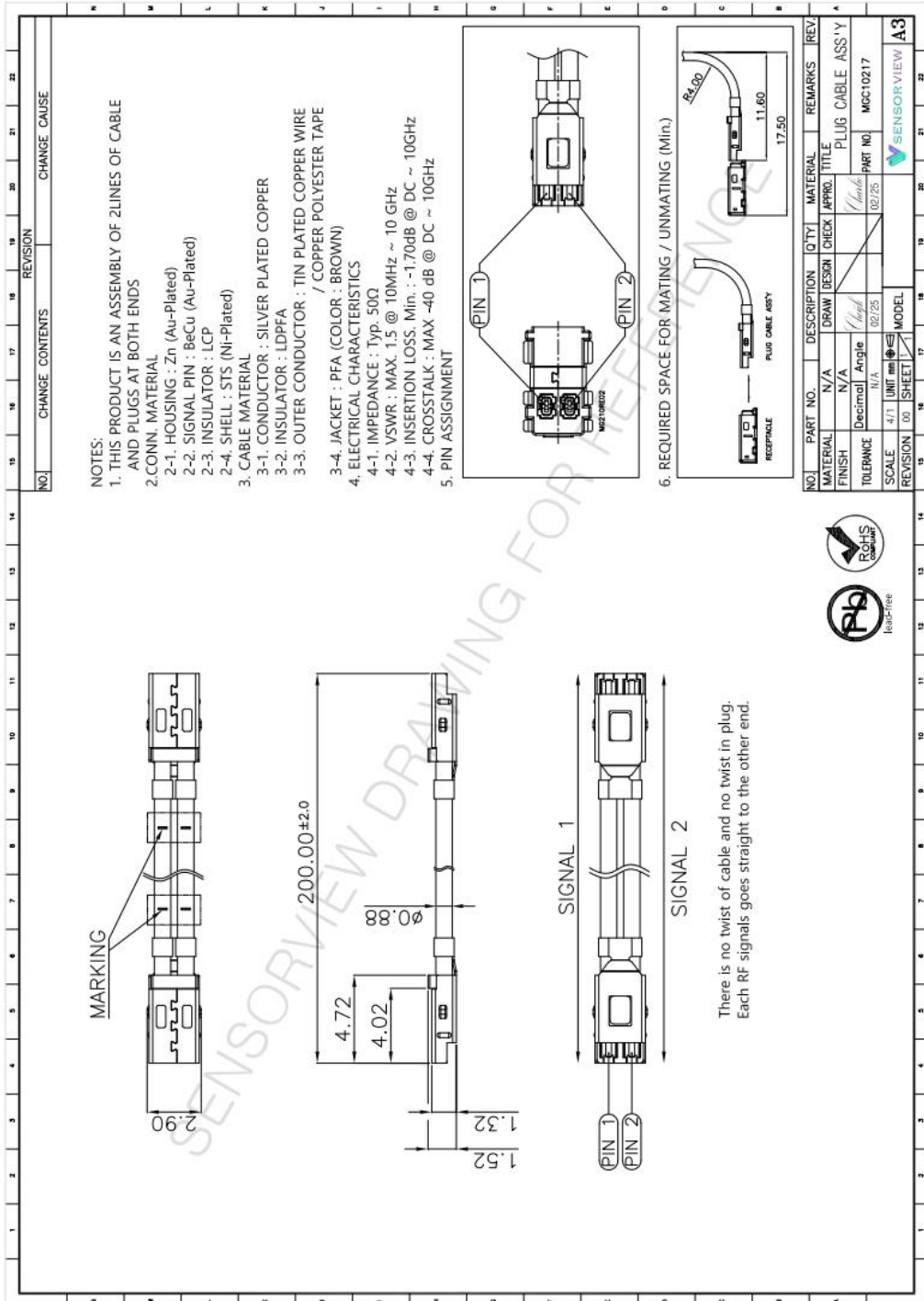


Document No.	CAD-MG2-C2-200
Date / Rev.	February 26, 2021 / 2.6
Confidential level	N/A

4. Drawing

→ Length of cable can be modified by request

4.2. Plug to plug cable assembly 200mm, 1-line mark (P/N : MGC10217)





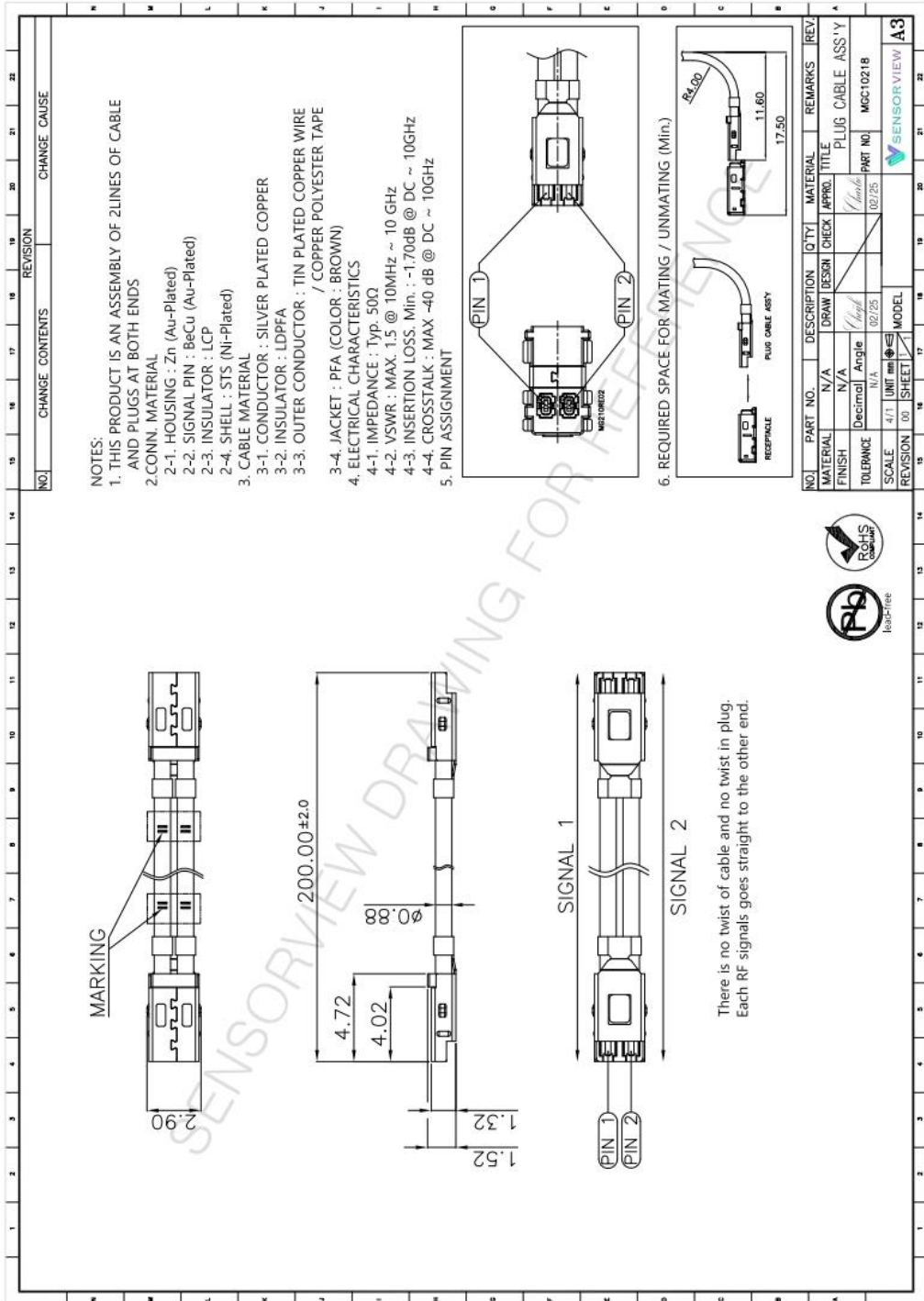
Datasheet _ MG210

Document No.	CAD-MG2-C2-200
Date / Rev.	February 26, 2021 / 2.6
Confidential level	N/A

4. Drawing

→ Length of cable can be modified by request

4.3. Plug to plug cable assembly 200mm, 2-lines mark (P/N : MGC10218)



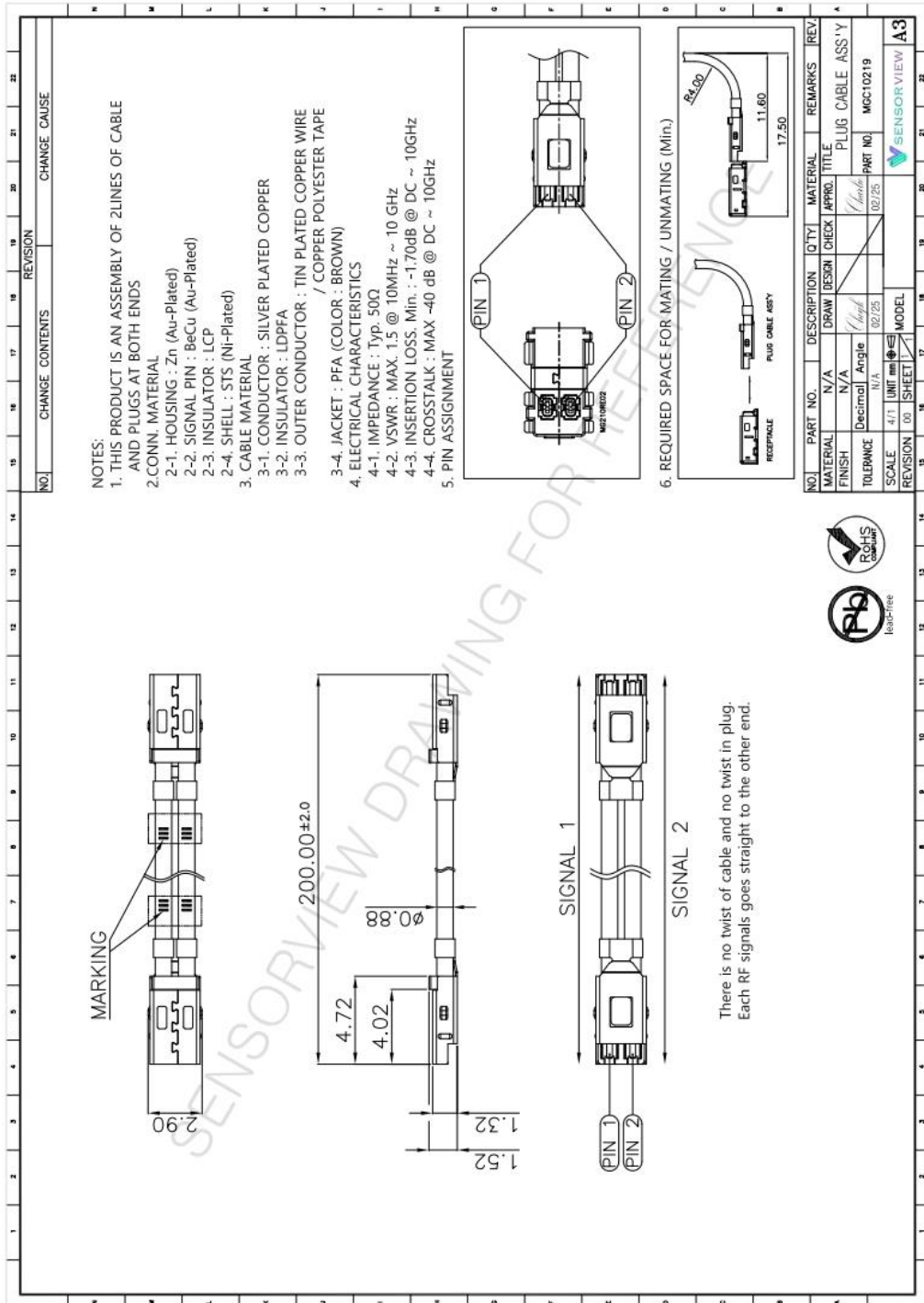


Document No.	CAD-MG2-C2-200
Date / Rev.	February 26, 2021 / 2.6
Confidential level	N/A

4. Drawing

Length of cable can be modified by request

4.4. Plug to plug cable assembly 200mm, 3-lines mark (P/N : MGC10219)

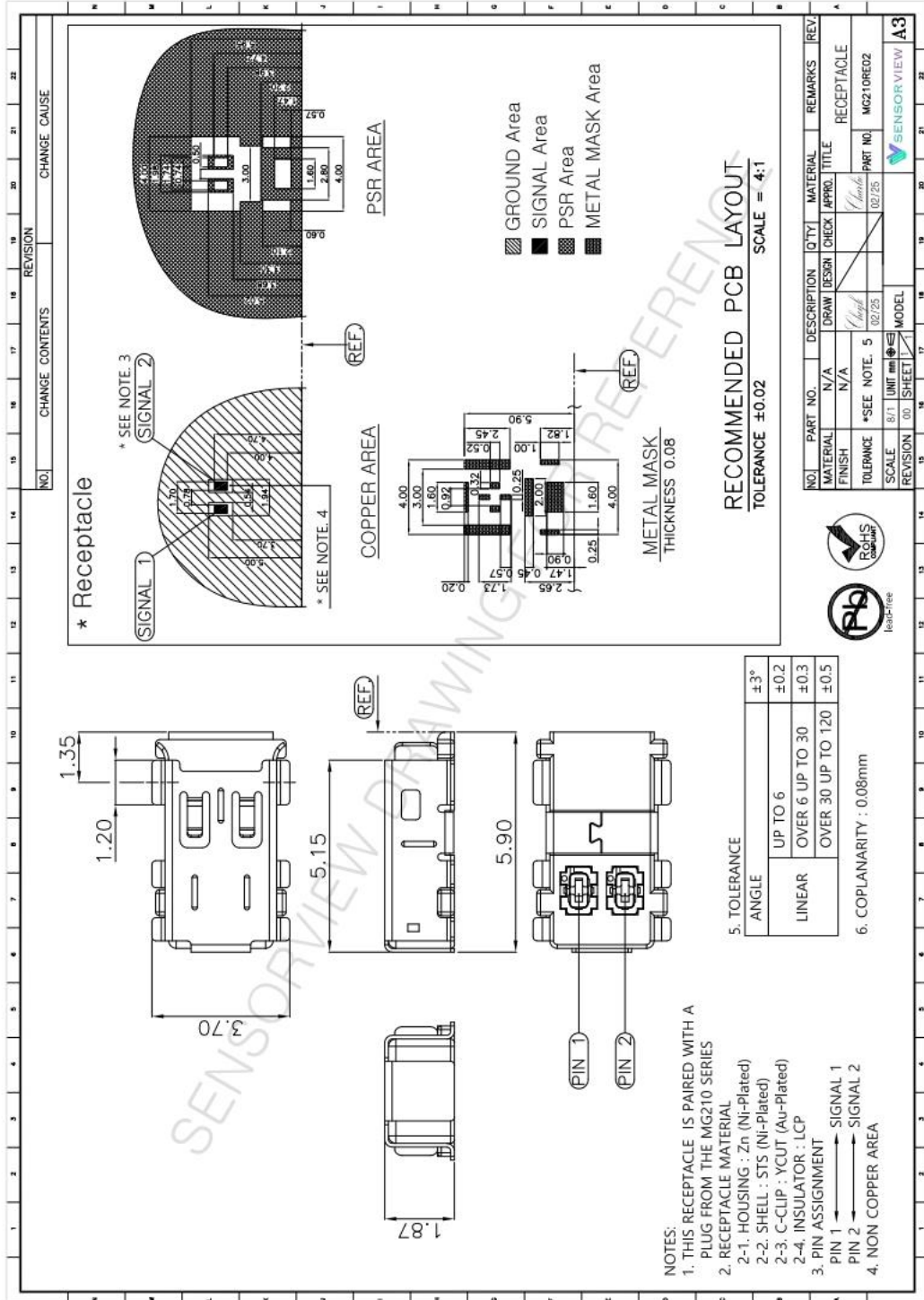




Datasheet _ MG210

Document No.	CAD-MG2-C2-200
Date / Rev.	February 26, 2021 / 2.6
Confidential level	N/A

4.5. Receptacle (P/N : MG210RE02)





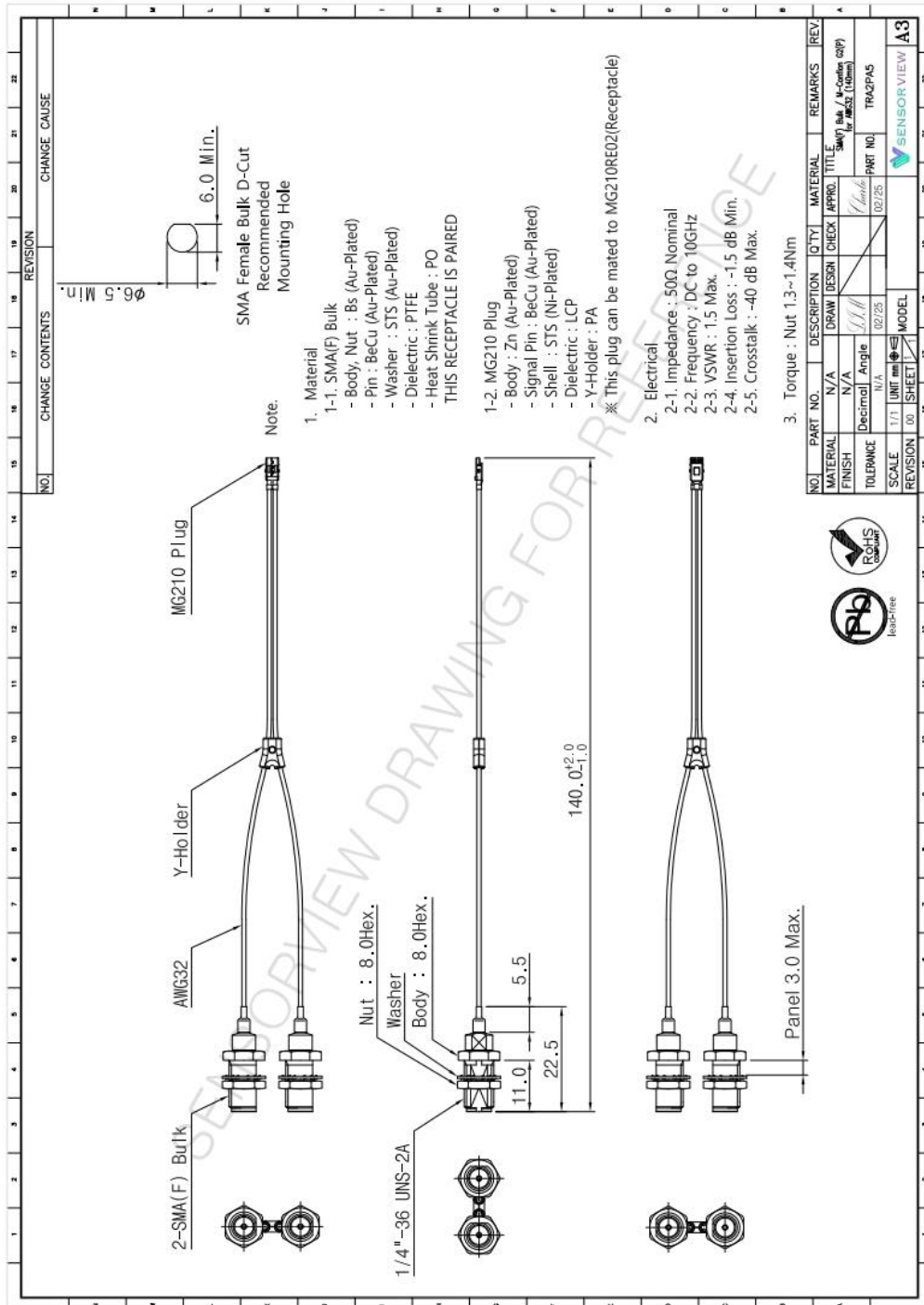
Datasheet _ MG210

Document No.	CAD-MG2-C2-200
Date / Rev.	February 26, 2021 / 2.6
Confidential level	N/A

4.6. Plug to Female SMA cable assembly 140mm (P/N : TRA2PA5)

[Recommended accessory]

Length of cable can be modified by request





Datasheet _ MG210

Document No.

CAD-MG2-C2-200

Date / Rev.

February 26, 2021 / 2.6

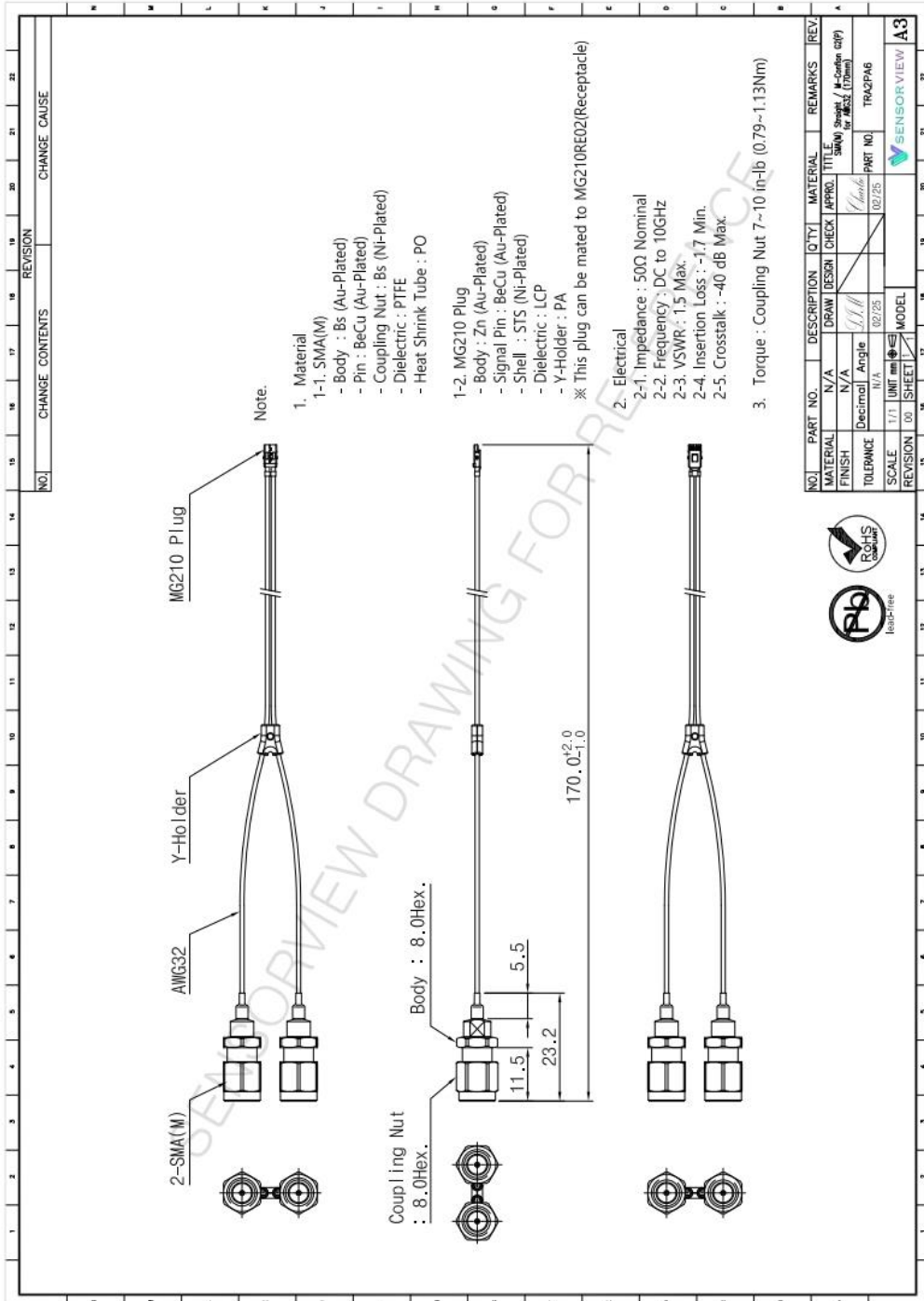
Confidential level

N/A

4.7. Plug to Male SMAs cable assembly 170mm (P/N : TRA2PA6)

[Recommended accessory]

Length of cable can be modified by request





4.8. Tweezer for Mating and unmating a plug (P/N : GJSZZA1)

[Recommended accessory]

