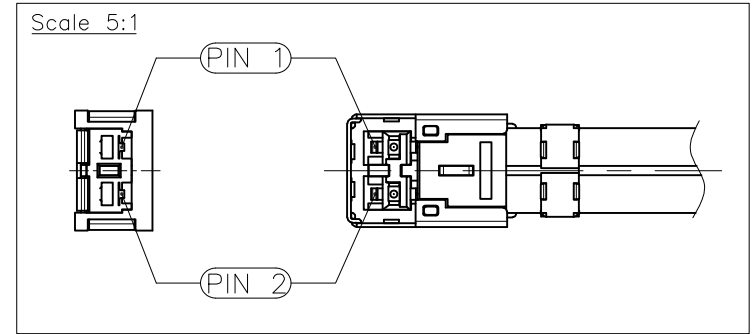
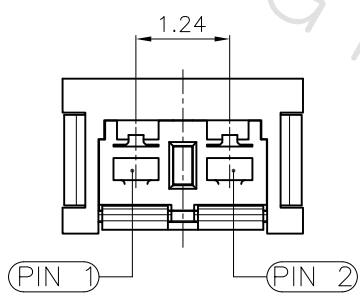
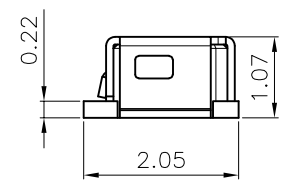
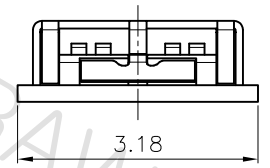
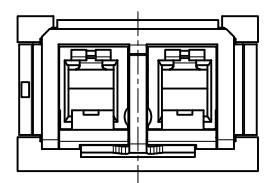
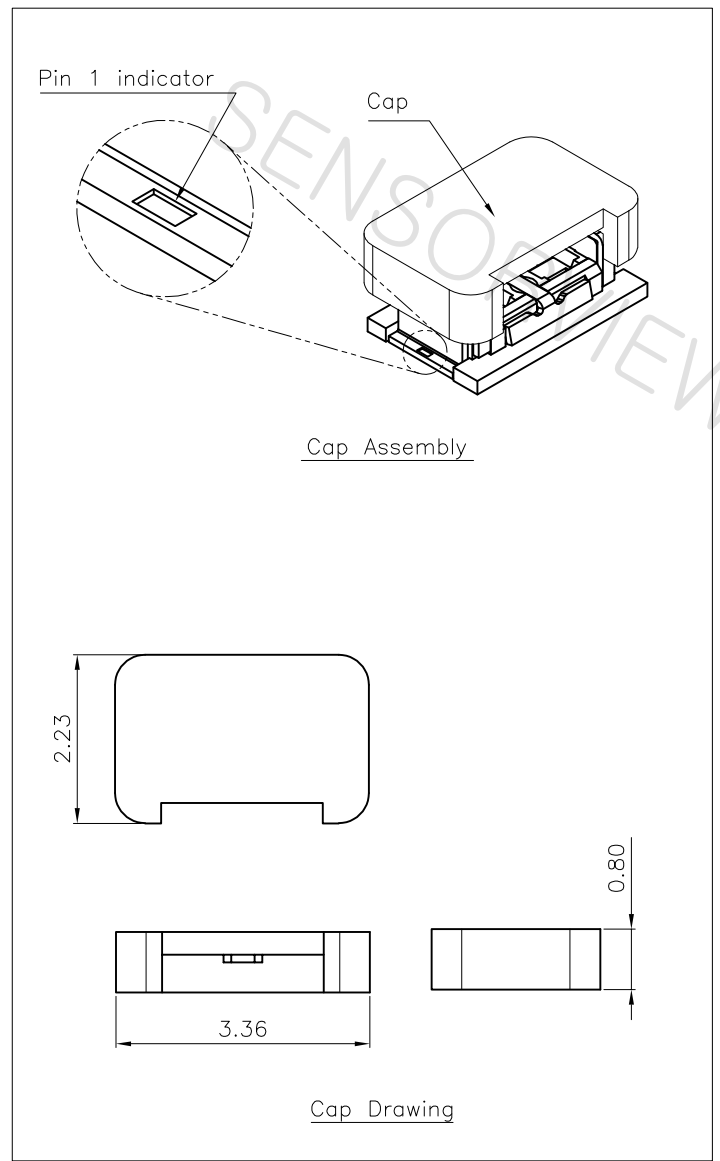


REVISION

NO.	CHANGE CONTENTS	CHANGE CAUSE
-----	-----------------	--------------



- NOTES:
- THIS RECEPTACLE IS PAIRED WITH A PLUG FROM THE MG215M SERIES
  - RECEPTACLE MATERIAL
    - HOUSING : Zn (Ni-Plated)
    - SHELL : STS (Ni-Plated)
    - C-CLIP : YCUT (Au-Plated)
    - INSULATOR : LCP
  - PIN ASSIGNMENT
 

PIN 1	←	→	SIGNAL 1
PIN 2	←	→	SIGNAL 2
  - TOLERANCE

ANGLE		±3°
LINEAR	UP TO 6	±0.2
	OVER 6 UP TO 30	±0.3
	OVER 30 UP TO 120	±0.5

No.	PART NO.	DESCRIPTION	Q'TY	MATERIAL	REMARKS	REV.
MATERIAL	*SEE NOTE.2	DRAW DESIGN CHECK APPRO.	TITLE RECEPTACLE			
FINISH	*SEE NOTE.2	JK.Choi DH.Kang SC.Cho	P/N MG215MRE02			
TOLERANCE	Decimal Angle	*SEE NOTE.4	22.10.31	22.10.31	22.10.31	
SCALE	10/1 UNITmm	MODEL	MG215M		SENSORVIEW	
REVISION	DRAFT SHEET 1/3				A4	



1

2

3

4


REVISION

NO.

CHANGE CONTENTS

CHANGE CAUSE

No.	Parameter	Unit	Specification
1	Item		MG215M Receptacle
2	Applicable country		Korea
3	Environmental Conditions		Indoor
4	Operating frequency range	GHz	DC ~ 15
5	Connector type		Vertical type
6	Weight (Ass'y)	g	about 0.02
7	Impedance	$\Omega$	50 (Typ.)
8	Insertion Loss	dB	See MG215M Plug Cable Assembly Specification
9	Return Loss	dB	-15.0dB (Max.) < With MG215M Plug Cable Assembly >
10	Crosstalk	dB	-50 (Typ.) < With MG215M Plug Cable Assembly >
11	Contact Resistance	m $\Omega$	Center / Outer 40 (Max.) < With MG215M Plug Cable Assembly >
12	Insulation Resistance	M $\Omega$	500 < With MG215M Plug Cable Assembly >
13	Dielectric voltage-withstand	V	100 < With MG215M Plug Cable Assembly > AC / 60 sec / 5mA
14	Rated Voltage	Vrms	85 < With MG215M Plug Cable Assembly >
15	Durability	Cycle	20 (Max.)
16	Mating Force	N·m	30 (Max.)
17	De-Mating Force		5 (Min.), After Test : 3 (Min.)
18	Operating Temperature	$^{\circ}$ C	-40 ~ 85
19	Storage Temperature	$^{\circ}$ C	-40 ~ 110
20	Salt Spray (Corrosion)		MIL-STD-202G, Method 101, Condition B
21	Thermal Shock		MIL-STD-202G, Method 107, Condition B1
22	High/Low Temperature		EIA-364-17
23	Vibration		MIL-STD-202G, Method 204, Condition A
24	Moisture Resistance		MIL-STD-202G, Method 106

No.	PART NO.	DESCRIPTION				Q'TY	MATERIAL	REMARKS	REV.
	N/A	DRAW	DESIGN	CHECK	APPRO.	TITLE	RECEPTACLE SPECIFICATION		
	N/A	JK.Choi	/	DH.Kang	SC.Cho	P/N	MG215MRE02		
	Decimal / Angle	22.10.31		22.10.31	22.10.31				
	TOLERANCE	N/A	22.10.31	22.10.31	22.10.31	MG215MRE02			
	SCALE	10/1	UNITmm	$\oplus$	MODEL	MG215M			
	REVISION	DRAFT	SHEET	2/3	MG215M				



A4

1

2

3

4

1

2

3

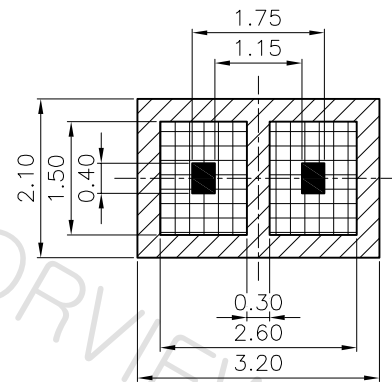
4

REVISION

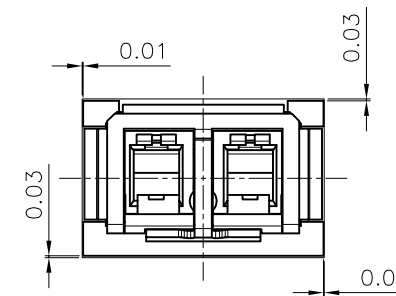
NO.

CHANGE CONTENTS

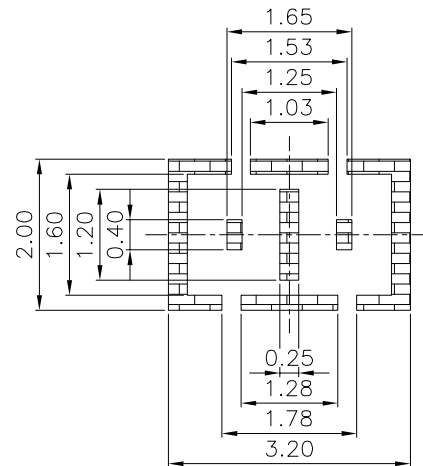
CHANGE CAUSE



RECOMMENDED FOOTPRINT PATTERN



CONNECTOR ON RECOMMENDED FOOTPRINT PATTERN

METAL MASK  
THICKNESS 0.05

- ▨ GROUND CONTACT
- SIGNAL CONTACT
- ▩ NO GROUND
- ▩ METAL MASK

No.	PART NO.	DESCRIPTION				Q'TY	MATERIAL	REMARKS	REV.
MATERIAL	N/A	DRAW	DESIGN	CHECK	APPRO.	TITLE			
FINISH	N/A	JK.Choi	/	DH.Kang	SC.Cho	RECOMMENDED PCB LAYOUT			
TOLERANCE	Decimal    Angle	±0.02		22.10.31	22.10.31	22.10.31	P/N		
SCALE	10/1 UNITmm	MODEL		MG215M		MG215MRE02			
REVISION	DRAFT SHEET	3/3							A4



1

2

3

4