

1

2

3

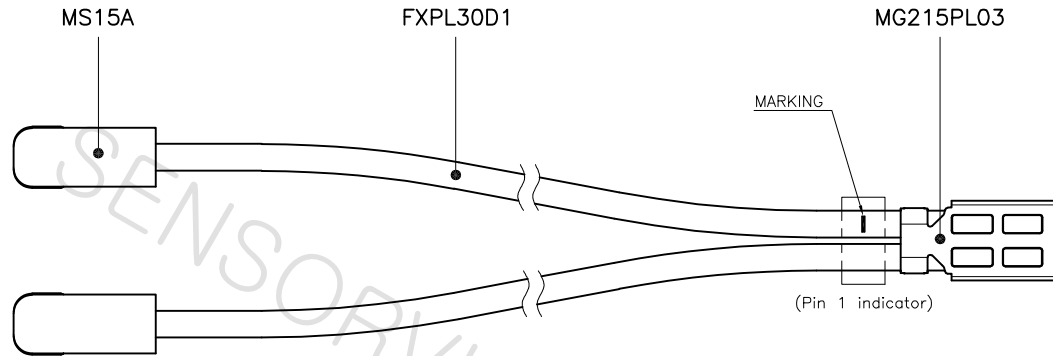
4

REVISION

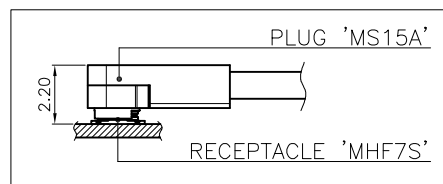
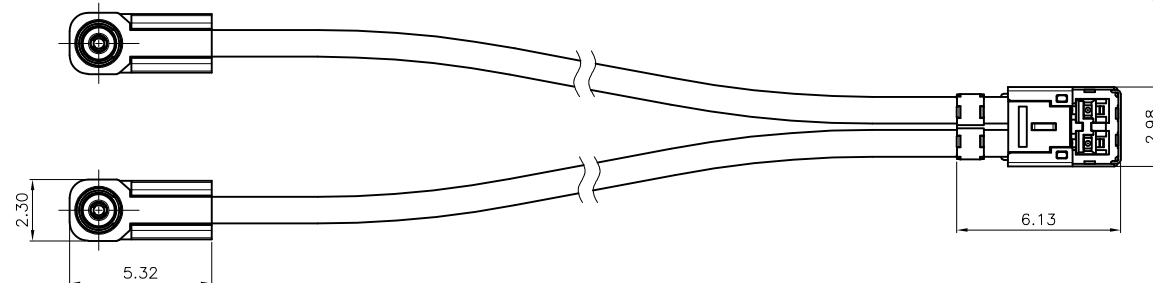
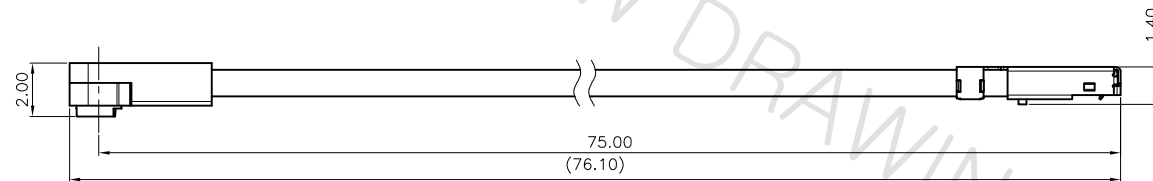
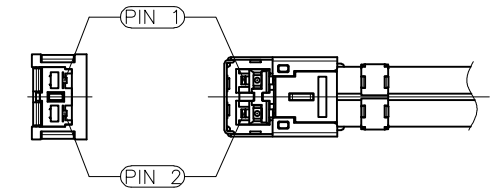
NO.

CHANGE CONTENTS

CHANGE CAUSE



Scale 5:1



MATING CONDITION



lead-free



NO.	PART NO.	DESCRIPTION				Q'TY	MATERIAL	REMARKS	REV.
MATERIAL	*SEE NOTE.2	DRAW	DESIGN	CHECK	APPRO.	TITLE			
FINISH	*SEE NOTE.2	JK.Choi		DH.Kang	SC.Cho	PLUG CABLE ASS'Y			
TOLERANCE	Decimal	Angle				P/N	MGC15205		
	N/A	N/A	22.10.31	22.10.31	22.10.31				
SCALE	5/1	UNITmm	MODEL		MG215M to MS15A				
REVISION	DRAFT	SHEET	1/1						A3

NOTES:

- THIS CONN. IS FOR 30AWG 2 CORES CABLES
- CONN. MATERIAL
 - MG215M PLUG(P/N:MG215PL03)
 - HOUSING : Zn (Au-Plated)
 - SIGNAL PIN : BeCu (Au-Plated)
 - INSULATOR : LCP
 - SHELL : STS (Ni-Plated)
 - MS15A PLUG(P/N:MS15A)
 - HOUSING : Zn (Ni-Plated)
 - SIGNAL PIN : BeCu (Au-Plated)
 - SLOT BODY : BeCu (Ni-Plated)
 - INSULATOR : PEEK
- CABLE MATERIAL
 - CONDUCTOR : SILVER PLATED COPPER
 - INSULATOR : LDPFA
 - OUTER CONDUCTOR : SILVER PLATED COPPER WIRE / COPPER TAPE
 - JACKET : FEP
- ELECTRICAL CHARACTERISTICS
 - FREQUENCY : DC ~ 15GHz
 - IMPEDANCE : Typ. 50Ω
 - RETURN LOSS : MAX. -15dB
 - INSERTION LOSS. : Typ. -0.60dB
 - CROSSTALK : Typ. -50 dB

1

2

3

4