

1

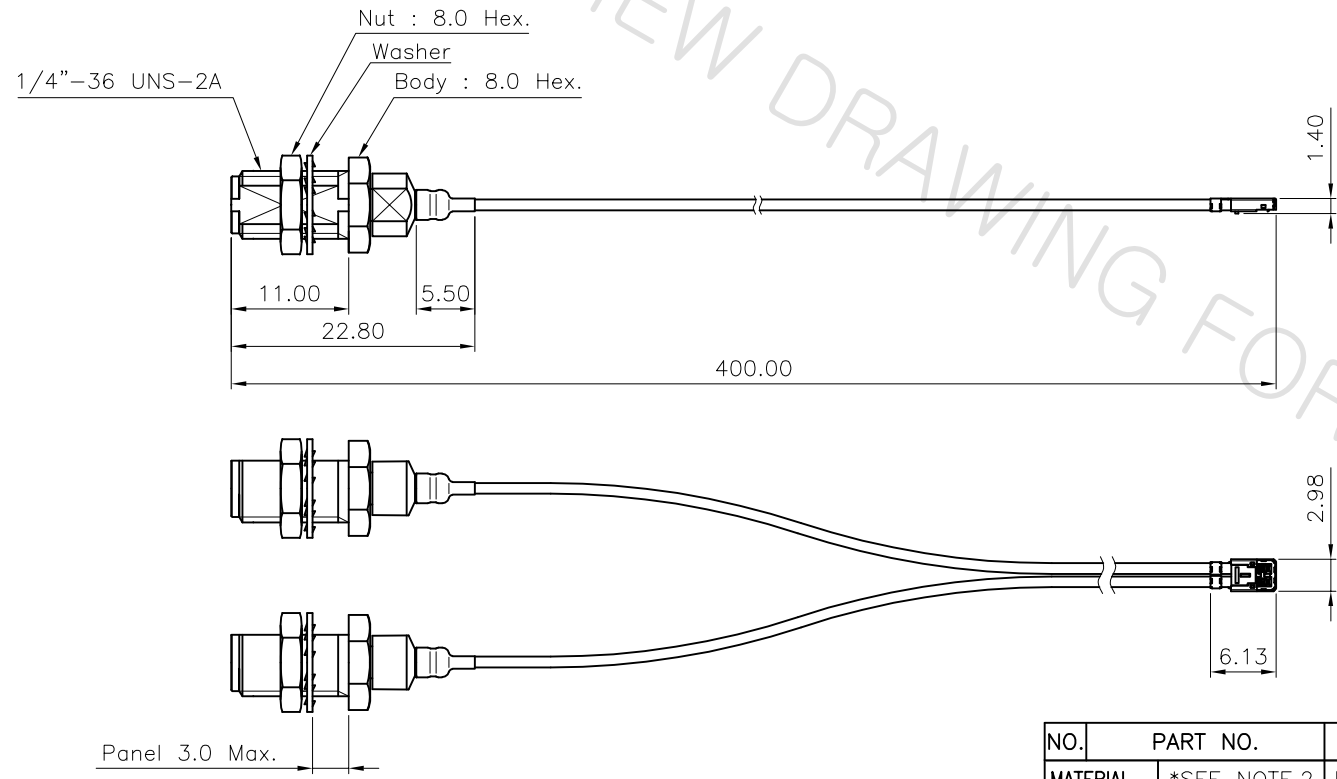
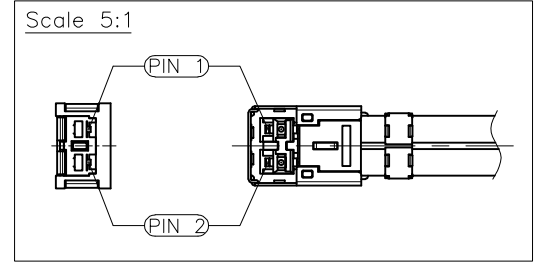
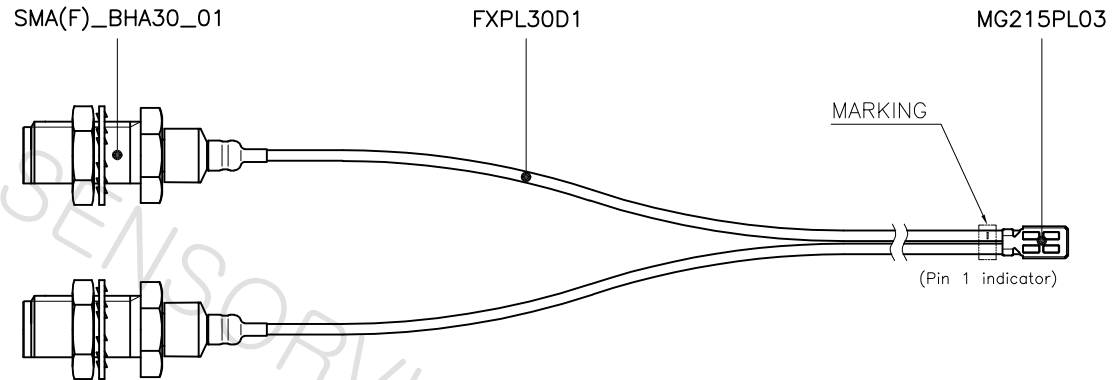
2

3

4

REVISION

NO.	CHANGE CONTENTS	CHANGE CAUSE
-----	-----------------	--------------



NOTES:

- THIS CONN. IS FOR 30AWG 2 CORES CABLES
- CONN. MATERIAL
 - MG215M PLUG(P/N:MG215PL03)
 - HOUSING : Zn (Au-Plated)
 - SIGNAL PIN : BeCu (Au-Plated)
 - INSULATOR : LCP
 - SHELL : STS (Ni-Plated)
 - SMA(F) Bulk(P/N:SMA(F)_BHA30_01)
 - BODY, NUT : Bs (Au-Plated)
 - PIN : BeCu (Au-Plated)
 - WASHER : STS (Au-Plated)
 - DIELECTRIC : PTFE
 - HEAT SHRINK TUBE : PO
- CABLE MATERIAL
 - CONDUCTOR : SILVER PLATED COPPER
 - INSULATOR : LDPE
 - OUTER CONDUCTOR : SILVER PLATED COPPER WIRE / COPPER TAPE
 - JACKET : FEP
- ELECTRICAL CHARACTERISTICS
 - FREQUENCY : DC ~ 15GHz
 - IMPEDANCE : Typ. 50Ω
 - RETURN LOSS : MAX. -15dB
 - INSERTION LOSS. : Typ. -2.40dB
 - CROSSTALK : Typ. -50 dB
- TORQUE : 1.3~1.4Nm [SMA(F) Bulk Nut]

Panel 3.0 Max.

NO.	PART NO.	DESCRIPTION	Q'TY	MATERIAL	REMARKS	REV.
MATERIAL	*SEE NOTE.2	DRAW DESIGN CHECK APPRO.	TITLE	PLUG CABLE ASS'Y		
FINISH	*SEE NOTE.2	JK.Choi DH.Kang SC.Cho	P/N	TRA2P01		
TOLERANCE	Decimal Angle	N/A N/A 22.10.31 22.10.31 22.10.31				
SCALE	2/1 UNITmm	MODEL	MG215M to SMA			
REVISION	DRAFT SHEET 1/1					A3

1

2

3

4